

**... senza tempo**



**denise  
&  
beppe  
berna**

# ... senza tempo

denise & beppe berna



all ... by  
beppe berna

© denise & beppe berna  
2019, bologna, italy



*Devotional figure  
Bahia de Caraquez, Ecuador  
cm. 9,5  
500 B.C. / A.D. 500.*

**ANTIQUARIATO**  
**Villa Castelbarco**  
**Vaprio d'Adda, Mi**

**Stand n. 9**

---

**october 19 – 27, 2019**

**works**

*archetypes*

# Proto-Dogon

160Y

Extremely rare male human figure.

13th / 14th century.

1281 - 1390 A.D. circa.

Radiocarbon C14.

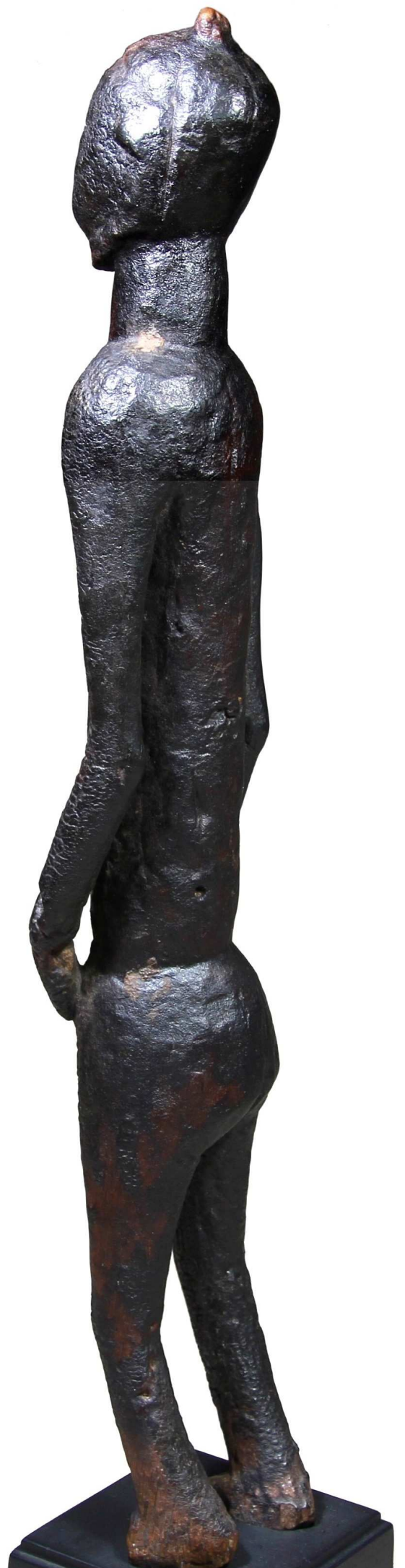
H. cm. 46,5

*Adrian Schlag, Brussels.  
French private collections.*











## Dogon, Nduleri

137Y

Human sculpture, probably  
female.  
... poetry of the time.

14th / early 17th century.  
1380 - 1640 A.D. circa.  
Radiocarbon C14.

H. cm. 47,5

*Old French collection.  
Denise and Beppe Berna, Bologna,  
late 1970's.  
Private collection, Bologna.*





# Tellem

175Y

Hermaphrodite figure.  
The *nommo* with raised  
arms.

14th / 16th century (on  
stylistic basis).

H. cm. 44

*D. Coffignier collection, France.  
Pace Primitive, New York, 2008,  
(n. 53-1720).*

*American private collection.  
Pace Primitive, New York, 2017.  
Galerie Flak, Paris.  
Montagut Gallery, Barcelona.*

*Publications:  
"Sculptural Tradition of the French  
Sudan", New York, 2008.*







*rigor*  
*of the form*



# Dogon, Bombou-Toro

165Y

Large sculpture depicting the  
*nommo*.

19th century or earlier.

H. cm. 55

*Important Dutch collection.  
Adrian Schlag, Brussels.*







*transcultural  
masterpiece*



## Dogon, Nduleri

110Y

Female figure.  
Idealization of absolute beauty.

18th / 19th century.

H. cm. 64

*Lucien Van de Velde,  
Antwerp, early 1980's.  
Wilhelm Krohn, Eckernförde,  
Germany.  
Joaquin Pecci, Brussels.  
Private collection, Bruxelles.*

*Publications:  
N ° 10, page 30 in "Sacrifice", 2011,  
Galerie Joaquin Pecci, Brussels.*





*the physical perfection  
reflection of the moral one*



## North-Eastern Luba

157Y

Female figure, for the ancestral  
cults.

According to the Luba, physical  
perfection reflected the moral  
one.

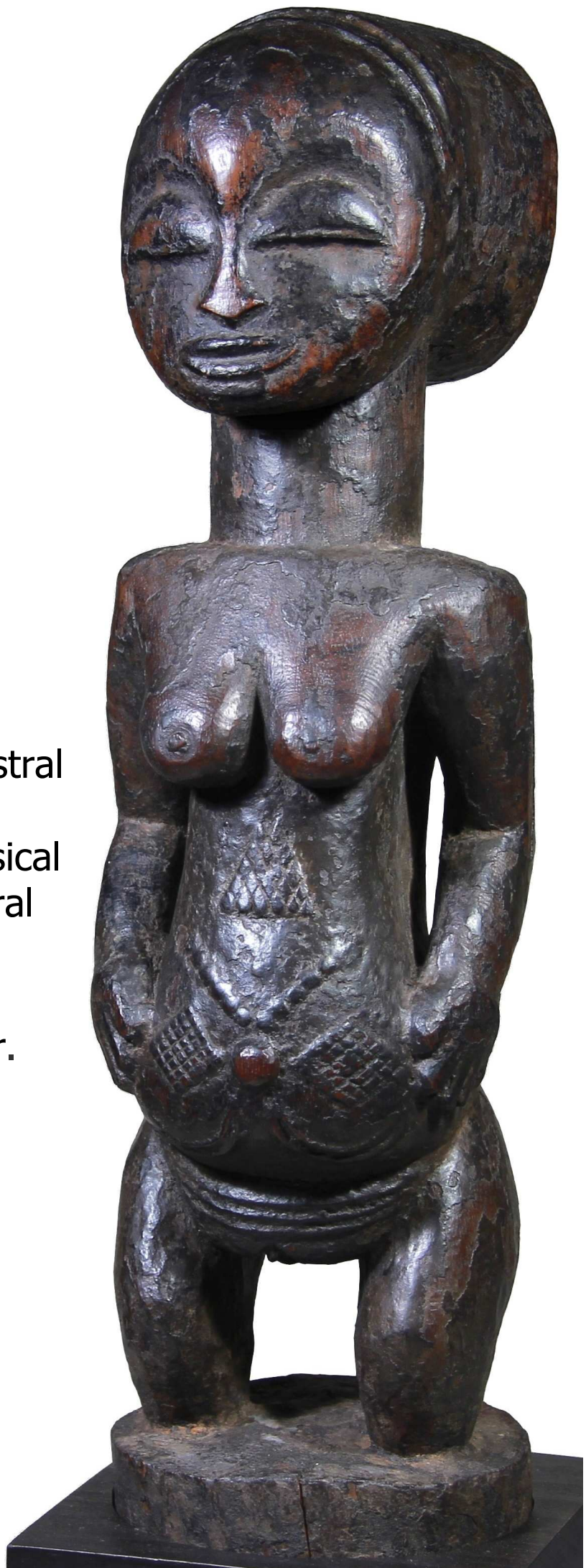
Early 20th century or earlier.

H. cm. 39,4.

*Joseph-Hans Christiaens,  
Brugge.*

*Private collection, Brussels.*

*Private collection, Paris.*







*the mystery*

# Huari / Chancay

156Y

Human head in wood  
(mask), for a *fardo*.

Peru.

700/1200 A.D.

H. cm. 35



*Collection of a French  
nobleman (early  
1950's).  
Berna family collection  
until late 1980's.  
Denise and Beppe  
Berna Collection,  
Bologna.*



*ideal*



## Yaure

159Y

*Je* mask by the  
*Master of the  
square mouths*  
(Beppe Berna).

H. cm. 30,5

*Jean-Paul Delcourt  
(1925-2018), in Abidjan  
since the 1940's.  
French private collection.  
Olivier Castellano, Paris.*









## Bamana

163Y

Top of a dignitary's staff by  
the *Master of Koulikoro*  
(Beppe Berna).

H. cm. 29

*Collected in situ, in the 1960's,  
by Franco Monti, Milano.  
Joaquin Pecci, Brussels.  
Belgian private collections.  
French private collections.*



*sublimated abstraction*



**Yoruba,  
Oshogbo area**

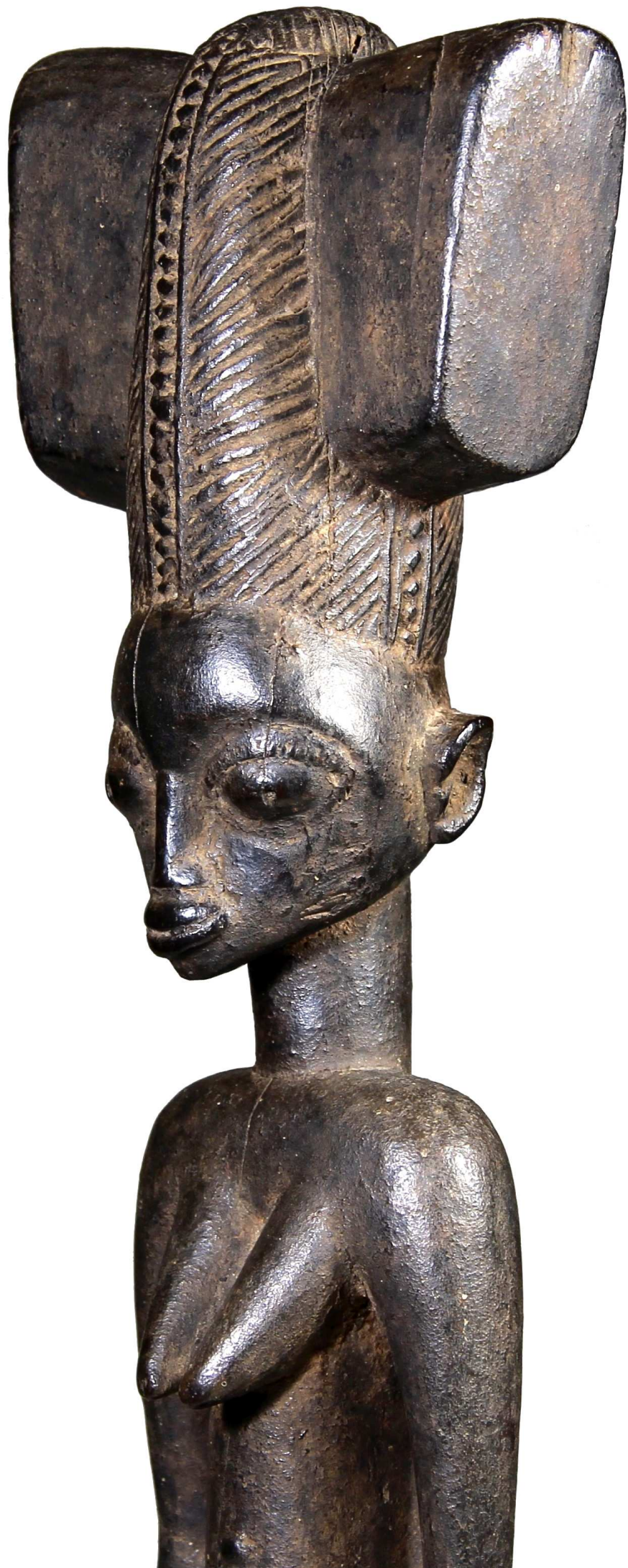
164Y

Extremely rare **oshe shango**,  
overcoming a hook symbol of  
the rainbow.

H. cm. 38

*Oumar Keinde, New York.  
Pace Gallery, New York (n. 53-0063).  
Private collection, New York.*







*the wild form*





**Bwa**

161Y

Extremely rare archetype of  
the mask **simbo bagoun**,  
the hornbill.

Late 19th / early 20th century.

H. cm. 32

*Emmanuel Bordier collection, Paris.*  
*Private collection, Paris.*



***cubism***

# Kota

170Y

Figure of reliquary  
*mbulu ngulu*.

Early 20th century.

H. cm. 59

*Old Dutch collection.  
French private  
collection.*

*An identical  
specimen, collected  
before 1934, is at the  
Royal Museum of  
Central Africa in  
Tervuren.*





*the excellence*







## Southern Idoma

172Y

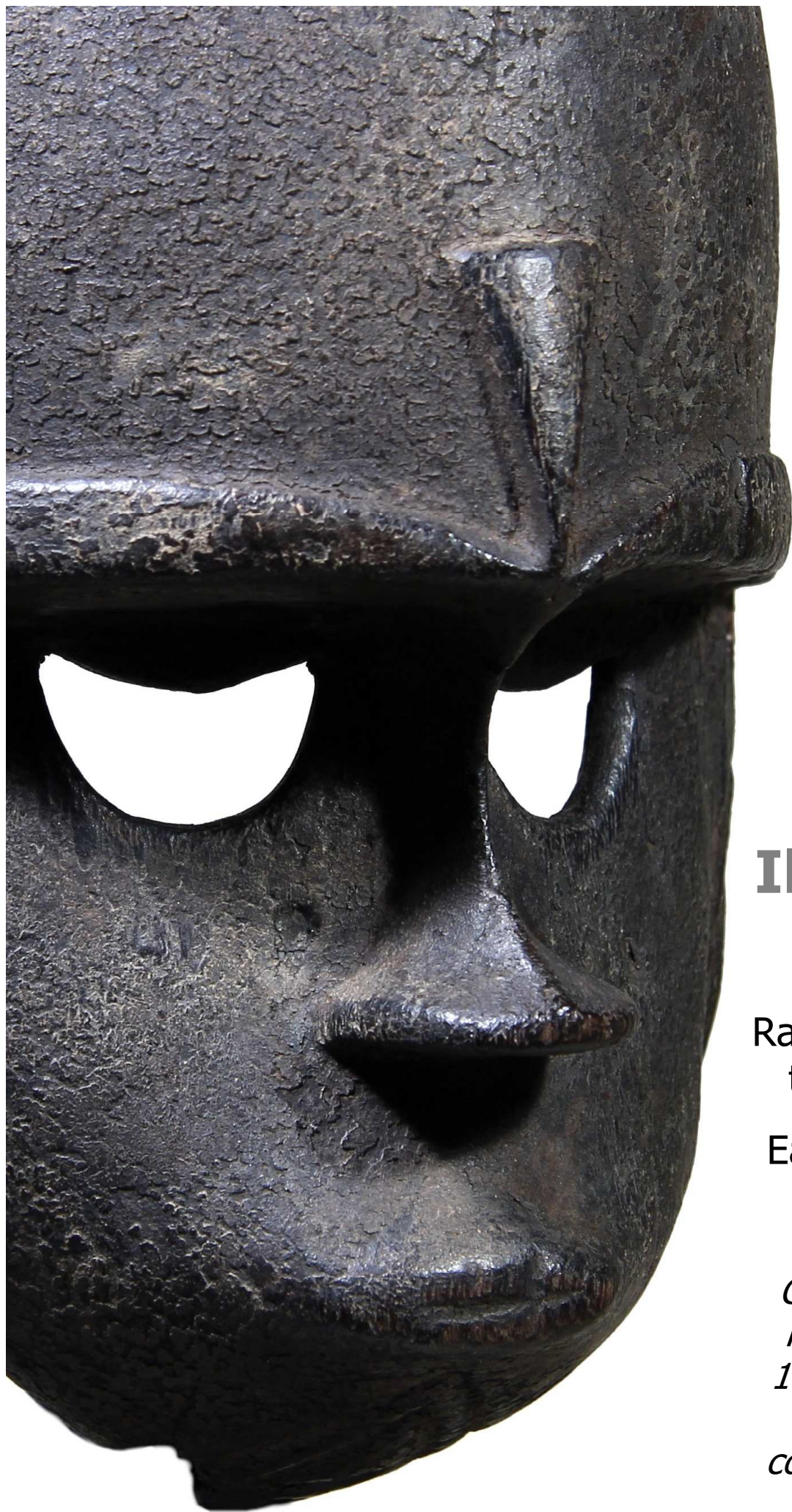
Old mask  
**okua**, from the  
Ikom region.

Early 20th century  
or before.

H. cm. 26

*Collected by Edward  
Klejman in the early  
1970's and remained  
in the Klejman  
collection, Paris, until  
2019.*





## **Ibibio, Eket**

173Y

Rare dance mask of  
the **Ekpo** society.

Early 20th century.

H. cm. 23,5

*Collected by Edward  
Klejman in the early  
1970's and remained  
in the Klejman  
collection, Paris, until  
2019.*



... **senza tempo**

... for more information: [berna@debberna.it](mailto:berna@debberna.it)



## Denise e Beppe Berna

arte tribale - arte archeologica  
tribal art - ancient art

Via Borgo S. Pietro 43 - 40126 Bologna, Italy

Phone +39 051 253175

*su appuntamento - by appointment only*